

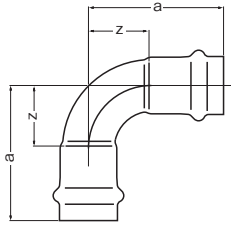
Dimension List 2015.02. VOL.01

***DOUBLE PRESS***<sup>TM</sup>

- Material : Stainless Steel (SUS304)
- Use suitable products properly according to the purpose.
- Read installation manual carefully before installation.
- Hold the installation workshop before installation.
- Specifications are subject to change any time without notice.

# DOUBLE PRESS

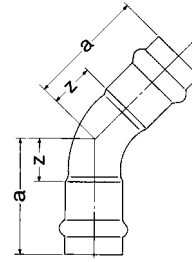
## 90CE



90° Compact Elbow

Size (Su)	a	z	Case		Qty per bag
			Size	Qty	
13	48	20	S	100	10
20	58	26	M	100	5
25	66	30	M	70	5

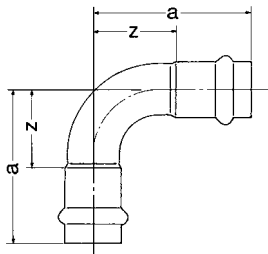
## 45E



45° Elbow

Size (Su)	a	z	Case		Qty per bag
			Size	Qty	
13	43	15	S	100	10
20	50	18	S	60	5
25	58	22	M	60	5
30	80	27	M	40	5
40	92	31	M	20	5
50	103	35	M	15	5
60	123	45	M	5	1

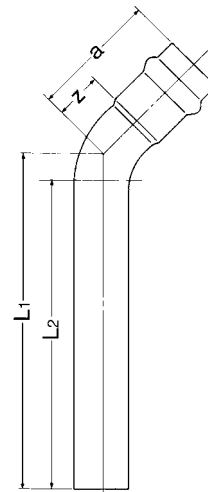
## 90E



90° Elbow

Size (Su)	a	z	Case		Qty per bag	
			Size	Qty		
20×13	20	64	32	S	60	5
	13	55	27			
30	105	52	M	35	5	
40	124	63	M	15	1	
50	138	70	M	10	1	
60	142	64	M	6	1	

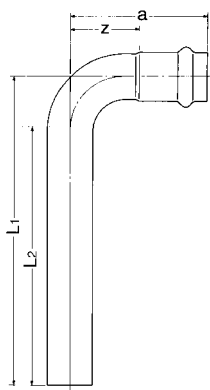
## 45SE



45° Socket Elbow

Size (Su)	a	z	L1	L2	Case		Qty per bag
					Size	Qty	
13	43	15	113	100	S	60	10
20	50	18	116	100	M	60	5
25	58	22	120	100	M	40	5
30	80	27	216	200	M	20	1
40	92	31	220	200	M	10	1
50	103	35	224	200	M	10	1
60	123	45	232	200	M	5	1

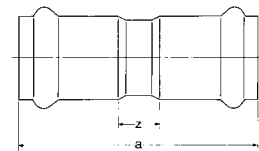
## 90SE



90° Socket Elbow

Size (Su)	a	z	L1	L2	Case		Qty per bag
					Size	Qty	
13	55	27	120	100	S	60	10
20	66	34	127	100	M	60	5
25	78	42	135	100	M	40	5
30	105	52	241	200	M	20	1
40	124	63	252	200	M	10	1
50	138	70	259	200	M	5	1
60	142	64	251	200	M	5	1

## S



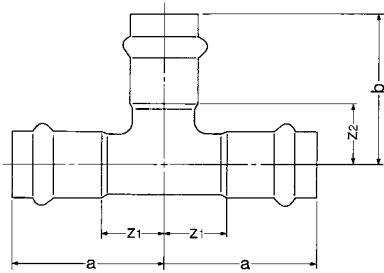
Socket

Size (Su)	a	z	Case		Qty per bag
			Size	Qty	
13	67	11	S	100	10
20	76	12	S	80	5
25	84	12	S	50	5
30	128	22	S	20	5
40	144	22	M	25	5
50	158	22	M	20	2
60	182	26	M	9	1

Case Size : S(320×200×140mm), M(380×320×140mm), L(380×320×270mm)

# DOUBLE PRESS

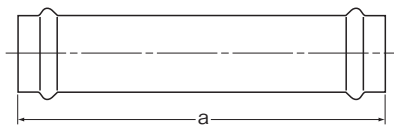
## T



Tee

Size (Su)	a	b	z1	z2	Case		Qty per bag
					Size	Qty	
13	45	45	17	17	S	60	10
20	54	54	22	22	M	70	5
20×13	54	49	22	21	M	80	5
25	63	63	27	27	M	40	5
25×13	63	60	27	32	M	50	5
25×20	63	59	27	27	M	50	5
30	113	113	60	60	M	15	1
30×13	113	74	60	46	M	20	1
30×20	113	78	60	46	M	20	1
30×25	113	82	60	46	M	20	1
40	121	121	60	60	M	10	1
40×13	121	76	60	48	M	10	1
40×20	121	80	60	48	M	10	1
40×25	121	84	60	48	M	10	1
40×30	121	113	60	60	M	10	1
50	119	119	51	51	M	8	1
50×13	119	80	51	52	M	10	1
50×20	119	84	51	52	M	10	1
50×25	119	94	51	58	M	10	1
50×30	119	123	51	70	M	10	1
50×40	119	121	51	60	M	8	1
60	141	141	63	63	M	3	1
60×20	131	92	53	60	M	5	1
60×25	131	96	53	60	M	5	1
60×30	141	123	63	70	M	5	1
60×40	141	131	63	70	M	4	1
60×50	141	129	63	61	M	3	1

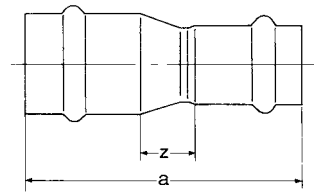
## BS



Bare Type Socket

Size (Su)	a	Case		Qty per bag
		Size	Qty	
13	130	S	80	10
20	145	M	80	5
25	153	M	40	5
30	128	S	20	5
40	144	M	25	5
50	158	M	20	2
60	182	M	8	1

## R

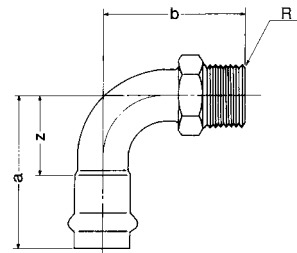


Reducer

Size (Su)	a	z	Case		Qty per bag
			Size	Qty	
20×13	75	15	S	70	5
25×13	85	21	S	60	5
25×20	84	16	S	60	5
30×13	126	45	S	30	5
30×20	125	40	S	30	5
30×25	116	27	S	30	5
40×13	144	55	M	40	1
40×20	143	50	M	40	5
40×25	147	50	M	40	5
40×30	150	36	M	20	5
50×20	177	77	M	30	1
50×25	159	55	M	30	1
50×30	176	55	M	25	1
50×40	163	34	M	20	1
60×20	204	94	M	15	1
60×25	209	95	M	10	1
60×30	196	65	M	10	1
60×40	204	65	M	10	1
60×50	187	41	M	10	1

## AEM I

For connection to female thread e.g. valve



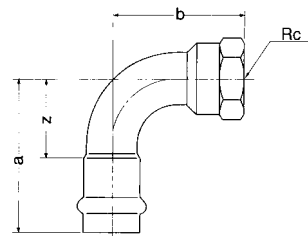
Adapter Elbow Male I (AEM I)

Size (Su)	a	b	z	Case		Qty per bag
				Size	Qty	
13×1/2	55	52	27	S	80	10
20×1/2	66	59	34	M	80	5
20×3/4	66	62	34	M	80	5
25×1	78	73	42	M	40	5

※ Thread is conformed to JIS B 0203 "Taper pipe thread".

## AEF

For connection to male thread e.g. equipments



Adapter Elbow Female

Size (Su)	a	b	z	Case		Qty per bag
				Size	Qty	
13×1/2	55	43	27	S	80	10
20×3/4	66	52	34	M	80	5
25×1	78	62	42	M	40	5

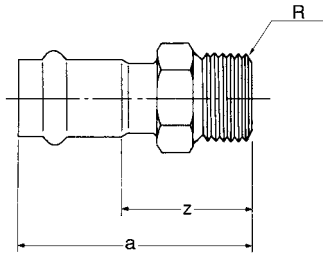
※ Thread is conformed to JIS B 0203 "Taper pipe thread".

Case Size : S (320×200×140mm), M (380×320×140mm), L (380×320×270mm)

# DOUBLE PRESS

## ASM I

For connection to female thread e.g. valve



Adapter Socket Male I (ASM I)

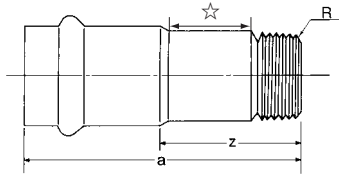
Size (Su)	a	z	Case		Qty per bag
			Size	Qty	
13×1/2	64	36	S	100	10
20×1/2	69	37	S	80	5
20×3/4	72	40	S	60	5
25×1	80	44	S	50	5

※Thread is conformed to JIS B 0203 "Taper pipe thread".

## ASM II

Grip ☆ part with pipe wrench.

For connection to female thread e.g. valve



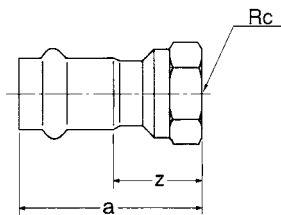
Adapter Socket Male II (ASM II)

Size (Su)	a	z	Case		Qty per bag
			Size	Qty	
30×1	101	48	S	30	5
30×1 1/4	118	65	S	25	5
40×1 1/4	112	51	M	40	1
40×1 1/2	126	65	M	40	1
50×1 1/2	121	53	M	30	1
50×2	144	76	M	25	1
60×2	139	61	M	15	1
60×2 1/2	216	138	M	6	1

※Thread is conformed to JIS B 0203 "Taper pipe thread".

## ASF

For connection to male thread e.g. equipments



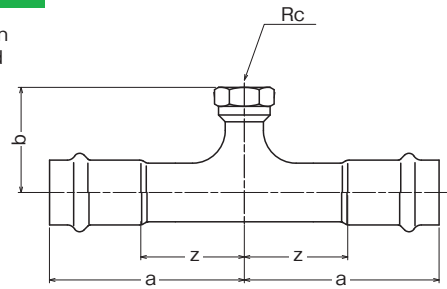
Adapter Socket Female

Size (Su)	a	z	Case		Qty per bag
			Size	Qty	
13×1/2	55	27	S	80	10
20×1/2	67	35	S	60	5
20×3/4	62	30	S	60	5
25×1	69	33	M	60	5
30×1	90	37	S	30	5
30×1 1/4	106	53	S	20	5
40×1 1/4	100	39	M	40	1
40×1 1/2	112	51	M	30	1
50×1 1/2	107	39	M	30	1
50×2	128	60	M	20	1
60×2	123	45	M	15	1

※Thread is conformed to JIS B 0203 "Taper pipe thread".

## ATF

For connection to male thread e.g. valve

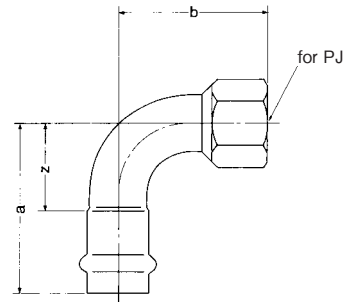


Adapter Tee Female

Size (Su)	a	b	z	Case		Qty per bag
				Size	Qty	
30×3/4	113	61	60	M	20	1
40×3/4	121	63	60	M	10	1
50×3/4	119	67	51	M	10	1
60×3/4	131	75	53	M	5	1

※Thread is conformed to JIS B 0203 "Taper pipe thread".

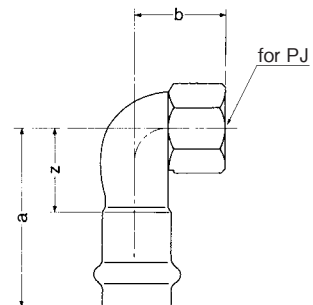
## WTE



Water Tap Elbow

Size (Su)	a	b	z	Case		Qty per bag
				Size	Qty	
13×1/2	55	48	27	S	80	10
20×1/2	66	55	34	M	80	5
20×3/4	66	57	34	M	80	5
25×1	78	67	42	M	40	5

## WTES



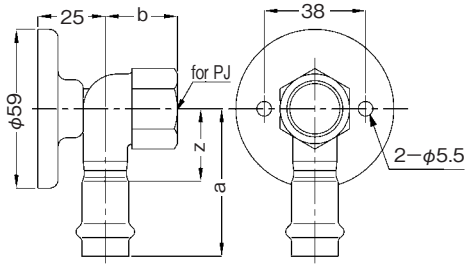
Water Tap Short Elbow

Size (Su)	a	b	z	Case		Qty per bag
				Size	Qty	
13×1/2	55	27	27	S	80	10
20×1/2	60	30	28	M	80	5
20×3/4	65	35	33	M	80	5

Case Size : S (320×200×140mm), M (380×320×140mm), L (380×320×270mm)

# DOUBLE PRESS

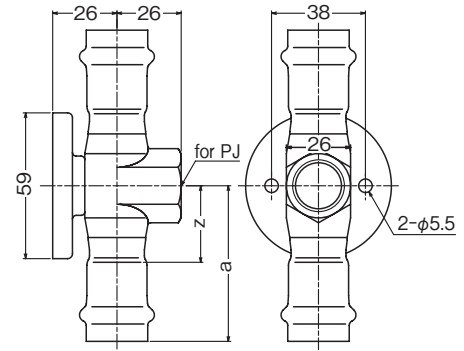
## WTE-P



Water Tap Elbow with clip plate

Size (Su)	a	b	z	Case		Qty per bag
				Size	Qty	
13×½	55	27	27	M	80	5
20×½	60	30	28	M	60	5

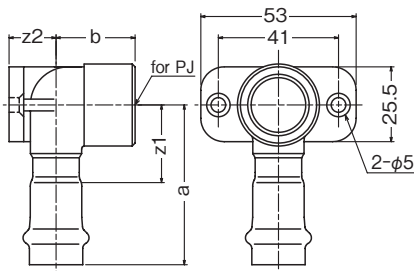
## WTT-P



Water Tap Tee with clip plate

Size (Su)	a	z	Case		Qty per bag
			Size	Qty	
13×½	64	36	S	20	5
20×½	63	31	S	20	5

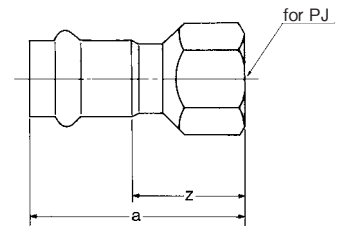
## WTE-P2



Water Tap Elbow with clip plate II

Size (Su)	a	b	z1	z2	Case		Qty per bag
					Size	Qty	
20×½	60	30	28	20	S	30	10

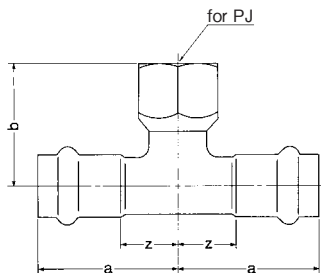
## WTS



Water Tap Socket

Size (Su)	a	z	Case		Qty per bag
			Size	Qty	
13×½	60	32	S	100	10
20×½	65	33	S	80	5
20×¾	67	35	S	60	5
25×½	75	39	S	60	5
25×¾	77	41	S	60	5
25×1	74	38	M	80	5

## WTT

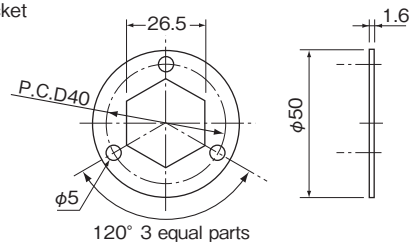


Water Tap Tee

Size (Su)	a	b	z	Case		Qty per bag
				Size	Qty	
13×½	45	41	17	M	80	10
20×½	54	45	22	M	80	5
20×¾	54	47	22	M	80	5
25×½	63	50	27	M	40	5
25×¾	63	52	27	M	40	5

## WTW

For anchoring Water Tap Socket to wall or floor.



Water Tap Washer

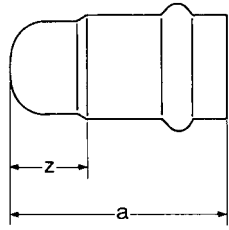
Size (Su)	Case		Qty per bag
	Size	Qty	
½	—	—	10

※The order unit is 10 pcs.

Case Size : S (320×200×140mm), M (380×320×140mm), L (380×320×270mm)

# DOUBLE PRESS

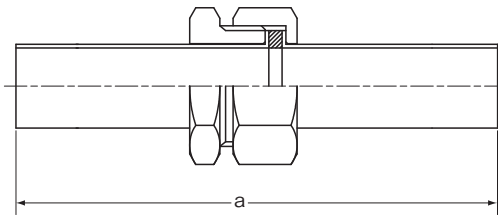
## C



Cap

Size (Su)	a	z	Case		Qty per bag
			Size	Qty	
13	38	10	S	100	10
20	50	18	S	80	5
25	56	20	S	80	5
30	80	27	S	30	5
40	92	31	M	40	1
50	102	34	M	30	1
60	117	39	M	15	1

## UI

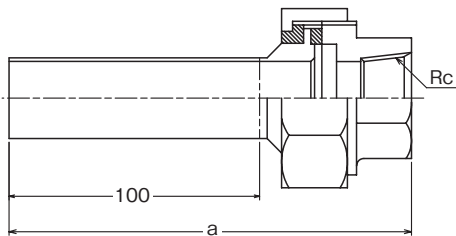


Union I

Size (Su)	a	Case		Qty per bag
		Size	Qty	
13	164	S	40	5
20	184	S	20	5
25	204	S	10	5

※ Nut : nickel chrome-plated bronze

## IUG



Insulated Union (for steel gas pipe: malleable plated)

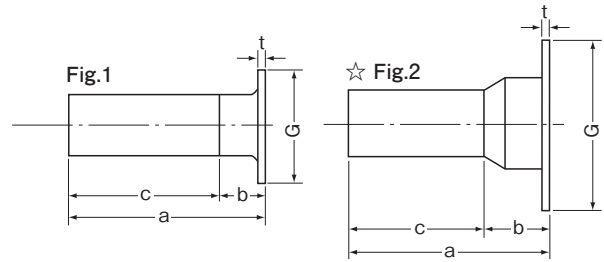
Size (Su)	a	Case		Qty per bag
		Size	Qty	
13×1/2	138	S	30	5
20×3/4	142	S	20	5
25×1	146	M	20	5

※ The screw is applied with the male thread for the pipe taper which is JIS B0203 standard.

※ Nut : Galvanized steel (malleable plated)

※ Maximum temperature under 80°C

## LT



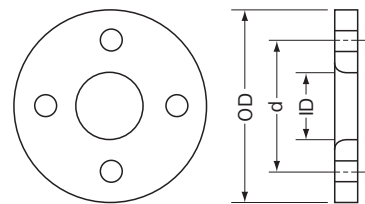
Lap Joint Stab End

Size (Su)	a	b	c	G	t	Case		CF Size (B)
						Size	Qty	
☆ 13×1/2	140	40	100	51	2.1	S	30	1/2
☆ 20×3/4	145	45	100	56	2.1	S	30	3/4
☆ 25×1	160	60	100	67	2.8	S	20	1
☆ 30×1	250	50	200	67	2.8	M	30	1
☆ 30×1 1/4	264	64	200	76	2.8	S	10	1 1/4
☆ 40×1 1/4	250	50	200	76	2.8	M	15	1 1/4
☆ 40×1 1/2	262	62	200	81	2.8	M	8	1 1/2
☆ 50×1 1/2	250	50	200	81	2.8	M	10	1 1/2
☆ 50×2	267	67	200	96	2.8	M	10	2
☆ 60×2	250	50	200	96	2.8	L	20	2
☆ 60×2 1/2	310	110	200	116	3.0	M	4	2 1/2

※ Spec for LT is 10K.

※ Please refer to Fig. 2 for shape of items with ☆.

## CF



Insulation Coated Flange

Size (Su)	ID	OD	d	Bolt Size
1/2	22.2	95	70	M12
3/4	27.7	100	75	M12
1	34.5	125	90	M16
1 1/4	43.2	135	100	M16
1 1/2	49.1	140	105	M16
2	61.1	155	120	M16
2 1/2	77.1	175	140	M16

※ Material : SS400, 10K flange (standard)

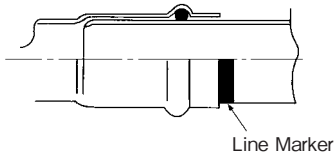
※ Steel flange with nylon coating

※ Maximum temperature under 60°C

# DOUBLE PRESS

## Sufficient Insertion length for each size

- ※Be sure to make insertion length mark on every pipe.
- ※Use the designated marker (called "Line Marker").

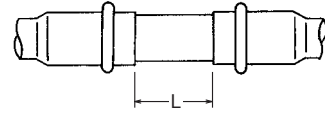


Size (Su)	13	20	25	30	40	50	60
Sufficient insertion length (mm)	28	32	36	53	61	68	78

⚠ Note that water leakage is not covered by the warranty if no line marker is present.

## Min. Dimension between fittings

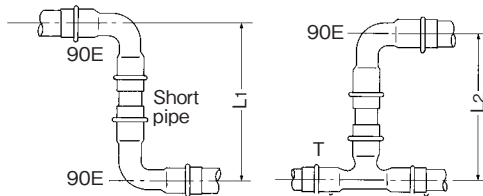
- ※Be sure to keep distance shown in table below between fittings as pipes are also to be deformed when pressing.



Size (Su)	13	20	25	30	40	50	60
Min. dimension (mm)	20	20	20	30	30	30	30

## Min. dimension between fittings, Invert 90E Ver 1

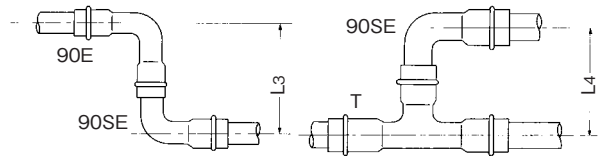
- ※The dimension of using 2 pcs of 90E fittings. (Using 90CE for size 13~25Su)



Length/Size (Su)	13	20	25	30	40	50	60
L1 (mm)	116	136	152	240	278	306	314
L2 (mm)	113	132	149	248	275	287	313

## Min. dimension between fittings, Invert 90E Ver 2

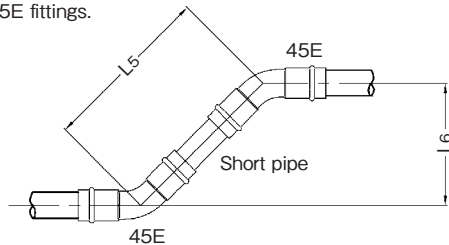
- ※The dimension of using 90SE and 90E fittings. (Using 90CE for size 13~25Su)



Length/Size (Su)	13	20	25	30	40	50	60
L3 (mm)	88	105	121	176	206	227	223
L4 (mm)	85	101	118	184	203	208	222

## Min. dimension between fittings, Invert 45E Ver 1

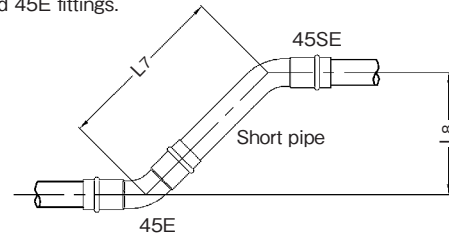
- ※The dimension of using 2 pcs of 45E fittings.



Length/Size (Su)	13	20	25	30	40	50	60
L5 (mm)	106	120	136	192	216	236	276
L6 (mm)	75	85	96	136	153	167	195

## Min. dimension between fittings, Invert 45E Ver 2

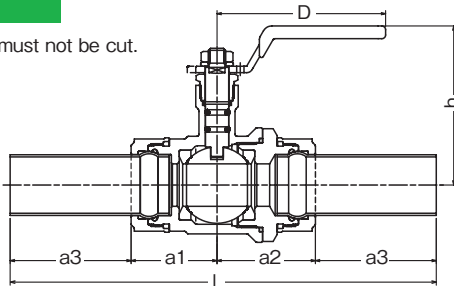
- ※The dimension of using 45SE and 45E fittings.



Length/Size (Su)	13	20	25	30	40	50	60
L7 (mm)	76	86	98	127	143	157	185
L8 (mm)	54	61	69	90	101	111	131

## TB

- ※Short tube must not be cut.



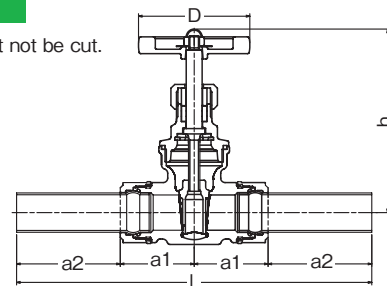
Ball Valve with Short tube

Size (Su)	a1	a2	a3	L	D	h	Case		Qty per bag
							Size	Qty	
13×1/2	29	38	64	195	60	68	S	5	1
20×3/4	35	44	73	225	80	72	S	4	1
25×1	41	46	71	229	80	75	S	3	1
30×1 1/4	47	56	98	299	130	90	S	2	1
40×1 1/2	54	58	115	342	130	95	M	2	1
50×2	60	63	148	419	130	103	M	2	1
60×2 1/2	73	74	167	481	130	108	SP	2	1

※To be advised for box size with "SP".

## TG

- ※Short tube must not be cut.



Gate Valve with Short tube

Size (Su)	a1	a2	L	D	h	Case		Qty per bag
						Size	Qty	
13×1/2	39	64	206	63	89	S	5	1
20×3/4	42	73	230	63	104	S	4	1
25×1	45	71	232	70	109	S	3	1
30×1 1/4	52	98	300	80	129	S	2	1
40×1 1/2	56	115	342	80	145	M	2	1
50×2	62	148	420	90	165	M	2	1
60×2 1/2	77	167	488	95	195	SP	2	1

※To be advised for box size with "SP".

Case Size : S (320×200×140mm), M (380×320×140mm), L (380×320×270mm)

## Crimping Tool/Gauge



BPD-08 (for 13~25Su)

BPD-03R (for 13~25Su)

BPD-11 (for 30~60Su)

Hexagonal Gauge

(for 13~25Su  
30, 40Su  
50, 60Su)

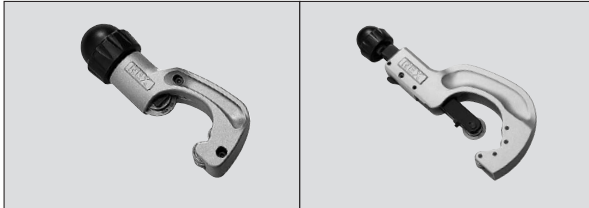
Line Marker

(for 13~25Su  
30~60Su  
Magic Marker)

Use the BENKAN designated press tool.

## Recommended Products

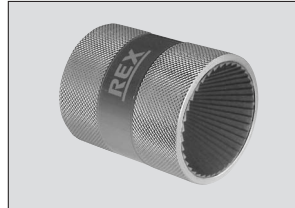
### ● Rotary Cutter (for Su)



REX RB Tube Cutter N30S  
(for outside diameter 4.5~32mm)

REX RB Tube Cutter N67S  
(for outside diameter 6~70mm)

### ● Reamer



REX Multi Reamer,  $\phi 10 \sim \phi 54$   
(for both inside and outside of pipe/tube)

※These Products are also available from BENKAN Corporation.

Light gauge stainless steel tubes for ordinary piping  
Standard : JIS G 3448 SUS304 TPD-A

### BENKAN SU Pipe Dimension List

Size (Su)	Outer Diameter (mm)		Thickness (mm)	
	Basic Dimension	Tolerance	Basic Dimension	Tolerance
13	15.88	0	0.8	$\pm 0.12$
20	22.22		1.0	$\pm 0.12$
25	28.58		1.0	$\pm 0.12$
30	34.0	$\pm 0.34$	1.2	$\pm 0.12$
40	42.7	$\pm 0.43$	1.2	$\pm 0.12$
50	48.6	$\pm 0.49$	1.2	$\pm 0.12$
60	60.5	$\pm 0.60$	1.5	$\pm 0.15$

### Caution

We will not take any responsibility for damages caused by improper process.

※Please inquire about the price.

## Accessories

Insulating Bolt & Nut		
Size (M)	L	Qty per bag
M12	55	4
M12	60	4
M16	60	4
M16	65	4
M16	70	4
M16	75	4

※The order unit is 4pcs.

Insulating Packing with Grip	
Size (B)	Qty per bag
$\frac{1}{2}$	1
$\frac{3}{4}$	1
1	1
$1\frac{1}{4}$	1
$1\frac{1}{2}$	1
2	1
$2\frac{1}{2}$	1

※For JIS 10K.



## BENKAN Corporation

HEAD OFFICE	5-1, ROKUSENGOKU, OTA-CITY, GUNMA-PREF, 3792305, JAPAN
OVERSEAS SECTION OSAKA OFFICE	3-1-18, NISHINAGASUCHO, AMAGASAKI-CITY, HYOGO-PREF, 6600805, JAPAN TEL: +81-6-6482-1856 FAX: +81-6-6482-1824
SAPPORO OFFICE	12-4, ODORINISHI, CHUOUKU, SAPPORO-CITY, HOKKAIDO, 0600042, JAPAN
SENDAI OFFICE	3-27-3, IZUMICHUOU, IZUMIKU, SENDAI-CITY, MIYAGI-PREF, 9813133, JAPAN
TOKYO OFFICE	2-5-13, SANNOU, OTAKU, TOKYO, 1438567, JAPAN
NAGOYA OFFICE	3-3-2, MEIEKI, NAKAMURAKU, NAGOYA-CITY, AICHI-PREF, 4500002, JAPAN
HIROSHIMA OFFICE	1-4-18, FUTABANOSATO, HIGASHIKU, HIROSHIMA-CITY, HIROSHIMA-PREF, 7320057, JAPAN
FUKUOKA OFFICE	3-11-22, TENJIN, CHUOUKU, FUKUOKA-CITY, FUKUOKA-PREF, 8100001, JAPAN

<http://www.benkan.com/en>

This Dimension List is made of recycled paper.